

15TH

THE PREUSS SCHOOL  
UC SAN DIEGO

**Happy Wednesday, Scholars!**  
**Remember the Preuss Way is**  
**Kindness, Respect, and Excellence.**  
**Have a great day!**

QUOTE OF THE DAY:

You're braver than you believe,  
and stronger than you seem  
and smarter than you think. -  
A.A. Milne, author

SAT Word: Inextricable  
incapable of being  
disentangled or untied

- STUDENTS THAT DO NOT COME IN DRESS CODE WILL NOW BE ASKED TO TURN IN THEIR PHONES FOR THE DAY IN EXCHANGE FOR A LOANER SHIRT OR BOTTOMS!! PLEASE PLAN ACCORDINGLY SO AS TO MAINTAIN THE SCHOOL DRESS CODE.
- AIRPODS AND HEADPHONES MUST BE PUT AWAY BEFORE ENTERING CAMPUS.
- EARLY BIRDS- STUDENTS WHO ARRIVE TO CAMPUS EARLIER THAN 8:25, PLEASE REMAIN IN THE AMPHITHEATER AREA AWAY FROM ARC CLUBS AND CLASSROOMS

# MTS TROLLEY RIDER INSIDER INFO



Please take a moment to learn about the MTS “See Something, Say Something” information. Click the MTS icon to read! If you need assistance when riding the trolley, you can text 619-318-1338 or call MTS dispatch at 619-595-4960. Put these important numbers in your phone so you have them available anytime you ride the trolley.

**REMEMBER TO ALWAYS HAVE RESPECT FOR OTHERS PASSENGERS WHILE RIDING THE TROLLEY!**

## Feeding San Diego Food Distribution Schedule

### 2023-2024 Feeding San Diego Distribution Calendar - The Preuss School

Last Updated January 5, 2024  
Cadence: 2nd and 4th Fridays

| July / julio      |    |    |    |    |    |    | August / agosto      |    |    |    |    |    |    | September / septiembre |    |    |    |    |    |    |  |  |   |
|-------------------|----|----|----|----|----|----|----------------------|----|----|----|----|----|----|------------------------|----|----|----|----|----|----|--|--|---|
| S                 | M  | T  | W  | T  | F  | S  | S                    | M  | T  | W  | T  | F  | S  | S                      | M  | T  | W  | T  | F  | S  |  |  |   |
|                   |    |    |    |    |    | 1  |                      |    |    |    |    |    | 1  | 2                      |    |    |    |    |    |    |  |  |   |
| 2                 | 3  | 4  | 5  | 6  | 7  | 8  | 6                    | 7  | 8  | 9  | 10 | 11 | 12 | 3                      | 4  | 5  | 6  | 7  | 8  | 9  |  |  |   |
| 9                 | 10 | 11 | 12 | 13 | 14 | 15 | 13                   | 14 | 15 | 16 | 17 | 18 | 19 | 10                     | 11 | 12 | 13 | 14 | 15 | 16 |  |  |   |
| 16                | 17 | 18 | 19 | 20 | 21 | 22 | 20                   | 21 | 22 | 23 | 24 | 25 | 26 | 17                     | 18 | 19 | 20 | 21 | 22 | 23 |  |  |   |
| 23                | 24 | 25 | 26 | 27 | 28 | 29 | 27                   | 28 | 29 | 30 | 31 |    |    | 24                     | 25 | 26 | 27 | 28 | 29 | 30 |  |  |   |
| 30                | 31 |    |    |    |    |    |                      |    |    |    |    |    |    |                        |    |    |    |    |    |    |  |  |   |
| October / octubre |    |    |    |    |    |    | November / noviembre |    |    |    |    |    |    | December / diciembre   |    |    |    |    |    |    |  |  |   |
| S                 | M  | T  | W  | T  | F  | S  | S                    | M  | T  | W  | T  | F  | S  | S                      | M  | T  | W  | T  | F  | S  |  |  |   |
| 1                 | 2  | 3  | 4  | 5  | 6  | 7  | 1                    | 2  |    |    | 3  | 4  | 1  | 2                      |    |    |    |    |    |    |  |  |   |
| 8                 | 9  | 10 | 11 | 12 | 13 | 14 | 5                    | 6  | 7  | 8  | 9  | 10 | 11 | 3                      | 4  | 5  | 6  | 7  | 8  | 9  |  |  |   |
| 15                | 16 | 17 | 18 | 19 | 20 | 21 | 12                   | 13 | 14 | 15 | 16 | 17 | 18 | 10                     | 11 | 12 | 13 | 14 | 15 | 16 |  |  |   |
| 22                | 23 | 24 | 25 | 26 | 27 | 28 | 19                   | 20 | 21 | 22 | 23 | 24 | 25 | 17                     | 18 | 19 | 20 | 21 | 22 | 23 |  |  |   |
| 29                | 30 | 31 |    |    |    |    | 26                   | 27 | 28 | 29 | 30 |    |    | 24                     | 25 | 26 | 27 | 28 | 29 | 30 |  |  |   |
|                   |    |    |    |    |    |    |                      |    |    |    |    |    |    |                        |    |    |    |    |    |    |  |  |   |
| January / enero   |    |    |    |    |    |    | February / febrero   |    |    |    |    |    |    | March / marzo          |    |    |    |    |    |    |  |  |   |
| S                 | M  | T  | W  | T  | F  | S  | S                    | M  | T  | W  | T  | F  | S  | S                      | M  | T  | W  | T  | F  | S  |  |  |   |
|                   |    |    |    |    |    | 1  |                      |    |    |    |    |    | 1  | 2                      | 3  | 1  | 2  |    |    |    |  |  |   |
| 7                 | 8  | 9  | 10 | 11 | 12 | 13 | 4                    | 5  | 6  | 7  | 8  | 9  | 10 | 3                      | 4  | 5  | 6  | 7  | 8  | 9  |  |  |   |
| 14                | 15 | 16 | 17 | 18 | 19 | 20 | 11                   | 12 | 13 | 14 | 15 | 16 | 17 | 10                     | 11 | 12 | 13 | 14 | 15 | 16 |  |  |   |
| 21                | 22 | 23 | 24 | 25 | 26 | 27 | 18                   | 19 | 20 | 21 | 22 | 23 | 24 | 17                     | 18 | 19 | 20 | 21 | 22 | 23 |  |  |   |
| 28                | 29 | 30 | 31 |    |    |    | 25                   | 26 | 27 | 28 | 29 |    |    | 24                     | 25 | 26 | 27 | 28 | 29 | 30 |  |  |   |
|                   |    |    |    |    |    |    |                      |    |    |    |    |    |    |                        |    |    |    |    |    |    |  |  |   |
| April / abril     |    |    |    |    |    |    | May / mayo           |    |    |    |    |    |    | June / junio           |    |    |    |    |    |    |  |  |   |
| S                 | M  | T  | W  | T  | F  | S  | S                    | M  | T  | W  | T  | F  | S  | S                      | M  | T  | W  | T  | F  | S  |  |  |   |
|                   |    |    |    |    |    | 1  |                      |    |    |    |    |    | 1  | 2                      | 3  | 4  |    |    |    |    |  |  | 1 |
| 7                 | 8  | 9  | 10 | 11 | 12 | 13 | 5                    | 6  | 7  | 8  | 9  | 10 | 11 | 2                      | 3  | 4  | 5  | 6  | 7  | 8  |  |  |   |
| 14                | 15 | 16 | 17 | 18 | 19 | 20 | 12                   | 13 | 14 | 15 | 16 | 17 | 18 | 9                      | 10 | 11 | 12 | 13 | 14 | 15 |  |  |   |
| 21                | 22 | 23 | 24 | 25 | 26 | 27 | 19                   | 20 | 21 | 22 | 23 | 24 | 25 | 16                     | 17 | 18 | 19 | 20 | 21 | 22 |  |  |   |
| 28                | 29 | 30 |    |    |    |    | 26                   | 27 | 28 | 29 | 30 | 31 | 23 | 24                     | 25 | 26 | 27 | 28 | 29 |    |  |  |   |
|                   |    |    |    |    |    |    |                      |    |    |    |    |    |    |                        |    |    |    |    |    |    |  |  |   |

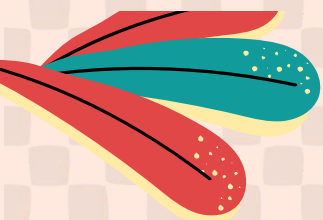
Delivery Scheduled

Start and End Days

FSD Holiday

School Holiday

NOTE: Distributions may be rescheduled due to holidays or operational needs.



# Middle School Lunch Tutoring



## What subject?

**ENGLISH**

## When?

During lunch starting 5/14

6th Grade Tues./ 7th & 8th Grade Thurs.

## Where?

Glass Classroom in the LIBRARY

## With Who?

Ms. Conception

## Who qualifies to go?

Students who are severely underperforming/ failing English or simply needs help with an assignment.

Parents will be notified of the mandatory English tutoring until either grade or performances improve

List of students who need to attend will be posted weekly on Google Classroom by every Friday

**SATURDAY ENRICHMENT ACADEMY IS THIS SATURDAY! (05/18)**

**9 AM -11 AM**

**BUSSES AVAILABLE**

**COME FOR SUPPORT ON ASSIGNMENTS OR A QUIET PLACE TO WORK.**

**THIS IS THE LAST S.E.A. BEFORE THE SPRING LEARNING SHOWCASE! GET SUPPORT WITH YOUR ESSAY, SPEECH AND/OR TRIFOLD.**



All 11th grade students interested in being a part of The Pride of Preuss next school year, please don't forget to fill out an application. The submission deadline is Friday, May 17th.

Scan QR code to receive an application

SCAN ME



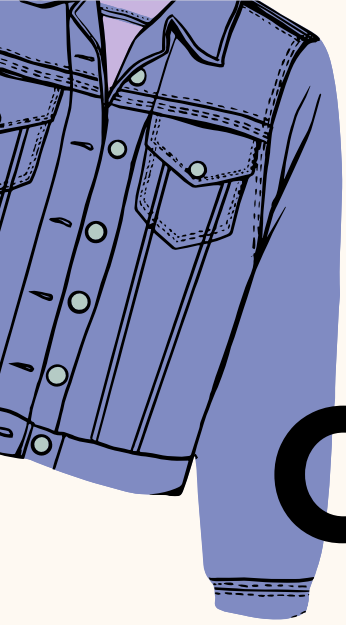
## YEARBOOK 2024-25 ROSTER



The official roster for next school year has been confirmed! To check the list make sure to stop by Dr. Ensberg's classroom (E203). It will be posted on his door. Further questions? Contact us @preussyearbook







# Clothing

# Donations

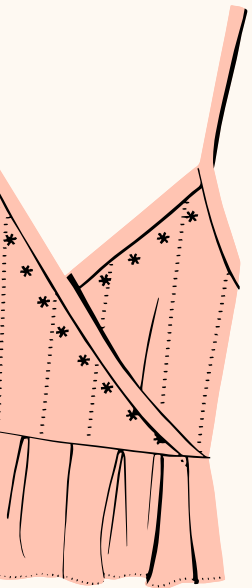
**Saturday May 4th - Friday May 17th**

**Clothes such as:** Shirts, sweaters, pants, shorts, skirts

**Drop off Zones!**

- The front office to Ms.Vanessa
- Mr.Arias's Room E103 (during school hours)

We appreciate your donations!



**TO ALL CURRENT 8TH TO 11TH GRADERS**

**VOTE FOR YOUR ASB EXECUTIVE BOARD FOR  
NEXT SCHOOL YEAR (2024-25)**

Voting will be open from 9 am until 4 pm using

[THIS FORM](#)



To see the candidates' campaigns, go to @preussasb on Instagram. Class officer elections will occur under the same format next Friday, May 10th."



Please report any broke/missing keys on keyboards or broken screens immediately to the IT department. If you do not and you are the last one to login in you will be charged the damage. We have had way too many broken keyboards and screens to the laptops in the classrooms. This notice will serve as your warning. Keys may cost up to \$5.00 a key, Entire keyboard is \$25, screen replacement up to \$90



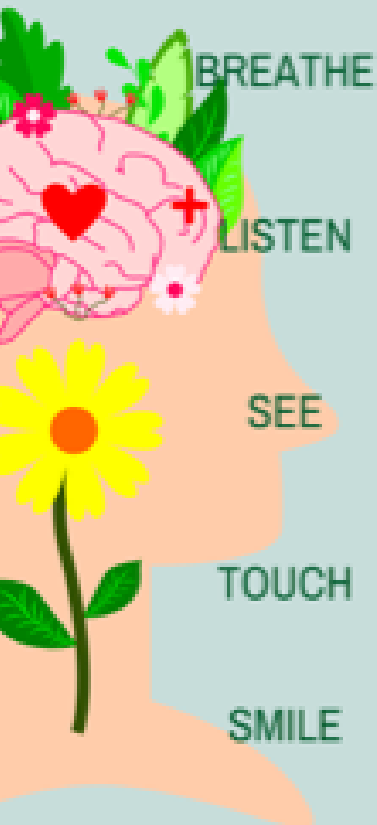
MAY IS...

# MENTAL HEALTH AWARENESS MONTH

Spend this month taking care of yourself because YOU ARE NUMBER 1!!!!!!

Keep an eye out for our TSUNAMI representative in the front office (make sure to read his sign and learn new things!) and for lunchtime activities :)

## MINDFUL MINUTE



## CLOSE YOUR EYES, SIT QUIETLY, AND...

TAKE DEEP BREATHS AND LET THEM OUT SLOWLY. THINK ABOUT HOW THE AIR GOES IN AND OUT OF YOUR LUNGS.

LISTEN TO THE SOUNDS AROUND YOU, AND THINK ABOUT HOW MANY SOUNDS YOU CAN NAME.

USE YOUR FINGERTIPS TO FEEL AN ITEM OR THE AREA AROUND YOU. THINK ABOUT HOW IT FEELS AND THE WORDS YOU WOULD USE TO DESCRIBE IT.

LOOK AT ONE ITEM AROUND YOU; AND THINK ABOUT ITS SHAPE, COLOR, TEXTURE, AND HOW IT'S MADE.

OPEN YOUR EYES AND ENJOY THE WORLD AROUND YOU.

## MAY IS MENTAL HEALTH AWARENESS MONTH



## YOUR SCHOOL COUNSELORS WANT TO MAKE SURE YOU ARE TAKING CARE OF YOUR MENTAL HEALTH

### PRACTICAL TIPS FOR EVERYDAY WELL-BEING

MENTAL HEALTH IS JUST AS IMPORTANT AS PHYSICAL HEALTH. IT AFFECTS HOW WE THINK, FEEL, AND ACT. TAKING CARE OF OUR MENTAL HEALTH IS ESSENTIAL FOR OVERALL WELL-BEING. HERE ARE SOME PRACTICAL TIPS TO HELP YOU MAINTAIN GOOD MENTAL HEALTH.

PRACTICE SELF-CARE. TAKE TIME TO DO THINGS THAT YOU ENJOY, SUCH AS READING A BOOK, TAKING A WALK, OR SPENDING QUALITY TIME WITH FRIENDS. PRIORITIZING SELF-CARE CAN HELP REDUCE STRESS AND IMPROVE MOOD.

CONNECT WITH OTHERS. HAVING A SUPPORT SYSTEM IS CRUCIAL FOR GOOD MENTAL HEALTH. REACH OUT TO FRIENDS, FAMILY, ADVISORY TEACHER, SCHOOL COUNSELOR, FSS OR TRUSTED ADULT IF YOU NEED TO TALK OR RECEIVE GUIDANCE.



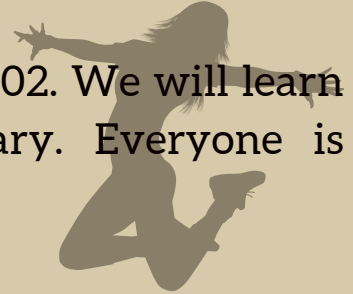
# CLUB ANNOUNCEMENTS

## Dreamers Club

Meets every 1st and 3rd Monday of the Month during Highschool Lunch E202

## Dance Club

Join us every Monday and Thursday afterschool in Room T102. We will learn different styles spanning from Hip Hop to Contemporary. Everyone is welcome!



## Film Club

We have decided that our next movie is 'Mamma Mia!' We are also still open to recruiting people to be part of our cast in our student-lead short film!



Follow us on instagram to stay updated with us at @preussfilmclub on our next meetings. See you all in E203, Wednesdays during HS lunch!!

## Volleyball Club

Meets every Friday from 4-5 in front of B103! Meet us there!



## Tsunami Club

Meets every Tuesday, after school (4-5pm) in Ms. V's room, A201

## Multicultural Club

Multicultural Empowerment Club meets on Thursdays during HS lunch in D203

## MUN Club:

Attention all high school students: Please join Preuss MUN every 1st and 3rd Thursday of the month during high school lunch. Please pick up your lunch, and head on over! Tell any of your friends who are not in the google classroom to come join us! See you then!





**\$1**

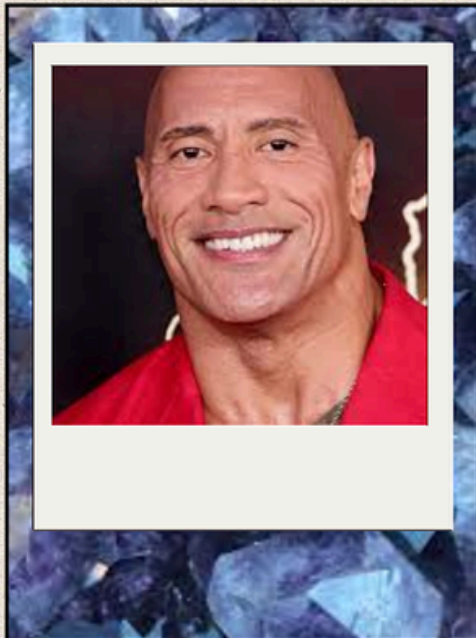
Come find us  
after school  
on  
Wednesday's  
for our snack  
sales!

*You rock!*



## BREAKING NEWS

Come join us in A103(Mrs.Petraglia's room) every **ADAY** friday. Feel free to bring rocks and minerals to showcase. Ask any questions on your mind to Andrew wang(6th grade) about the club or rocks and minerals.



## SPECIAL EDITION

## FINANCE CLUB

Tuesdays & Wednesdays | 4-5 pm | C201

Join us to learn about the financial literacy topic of the month:

**Buffett Munger Value Investing**

OPEN TO MIDDLE SCHOOL STUDENTS



# OTTER POPS



**Wednesdays Afterschool!**

# 2/\$1



## Black Student Union

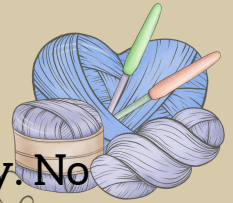
Black Student Union (BSU) invites you to join us every Thursday during high school lunch in E101 for fun games, spirited debates, and a safe place to navigate life!

## Interact Club

Are you looking for community service hours and ways to give back to your community? Look no further because we can help you with that. Meet us during LUNCH every TUESDAY in Room D201 to get involved!

## Crochet Club

Meets in Ms. Garcia's room, E102, from 4:00 to 5:00 every Thursday. No experience needed! Join our community of crochets' for a nice relaxing hour of creativity and conversation



## Book Club

The Preuss Book Club is a community where students can enrich their knowledge and create a passion for books. We meet on Mondays at lunch in E101 and all high school students are welcome!



**@PREUSSSCIOLY**

**JOIN SCIENCE OLYMPIAD!**

QUESTIONS?  
MR. FOZI  
C202

BUILD TOWERS AND ROCKET LAUNCHERS, DECRYPT SECRET MESSAGES, SOLVE CRIMES WITH SCIENCE EXPERIMENTS, AND MORE! WE COMPETE IN EVENTS RELATED TO A VARIETY OF STEM FIELDS! COME JOIN THE TEAM! WE MEET WEDNESDAYS @ 4:15PM IN C202.

The poster features a blue and white abstract background with a gear-like pattern. At the bottom, there are two photographs: one showing a student in a white shirt interacting with a group of students at a table, and another showing students working together at a table with laptops and papers.

**PREUSS CHESS CLUB**

EVERY WEDNESDAY  
4PM - 5PM  
ROOM E103

NO EXPERIENCE NECESSARY.  
STUDENTS ARE WELCOME

The poster features a dark blue background. On the left, there is a large graphic of a chessboard with various chess pieces (king, queen, knight, rook, pawn) arranged on the board. On the right, there is a white square containing a crown icon. Below the chessboard, there is a white box with the text 'NO EXPERIENCE NECESSARY. STUDENTS ARE WELCOME'.

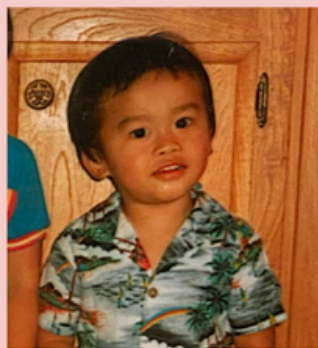
# Celebrating Asian-American Pacific Islander Heritage Month!



## Celebrating Asian-American Pacific Islander Heritage Month



### GUESS THE STAFF MEMBER!



Born and raised in City Heights, this teacher graduated from rival universities. This teacher is a big fan of Jackie Chan, Chow Yun Fat, and Stephow Chow films. This teacher also enjoys eating and cooking Asian food, and makes it a priority every year to attend as many Lunar New Year festivals as possible with their family.